



Nestled in the charming area of Pew Hill, Chippenham, this delightful former gatehouse cottage presents an excellent opportunity for those seeking a comfortable and well-appointed bungalow. The property boasts two spacious double bedrooms, making it ideal for small families, couples, or individuals looking for extra space.

As you enter, you will be greeted by a well-presented interior that showcases a modern kitchen and a stylish bathroom, both designed to meet the needs of contemporary living. The bungalow is further enhanced by replacement UPVC double glazed windows, ensuring warmth and energy efficiency throughout the year, complemented by a reliable gas central heating system.

The property also benefits from convenient parking, a valuable asset in this desirable location. Moreover, it is situated within walking distance of the town centre, providing easy access to a variety of shops, cafes, and local amenities, making daily life both convenient and enjoyable.

Viewing

Viewings Strictly by appointment with the sole selling agents Atwell Martin call or e-mail us today to confirm your appointment | 65 New Road, Chippenham, Wiltshire SN15 1ES

Situation - Chippenham

Chippenham itself has a wide range of amenities to include High Street retailers plus supermarkets and retail parks and, in addition, there is a leisure centre with indoor swimming pool, library, cinema and public parks. Chippenham also benefits from excellent schooling with numerous primary and three highly sought after secondary schools. For those wishing to commute there is also a regular main line rail service from Chippenham station to London (Paddington) and

the West Country and the M4 motorway is easily accessed via Junction 17 a few miles north of the town.

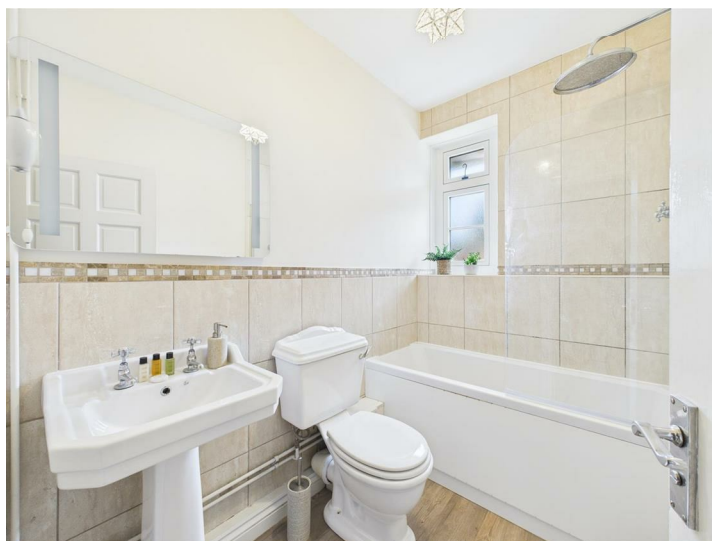
Property Information

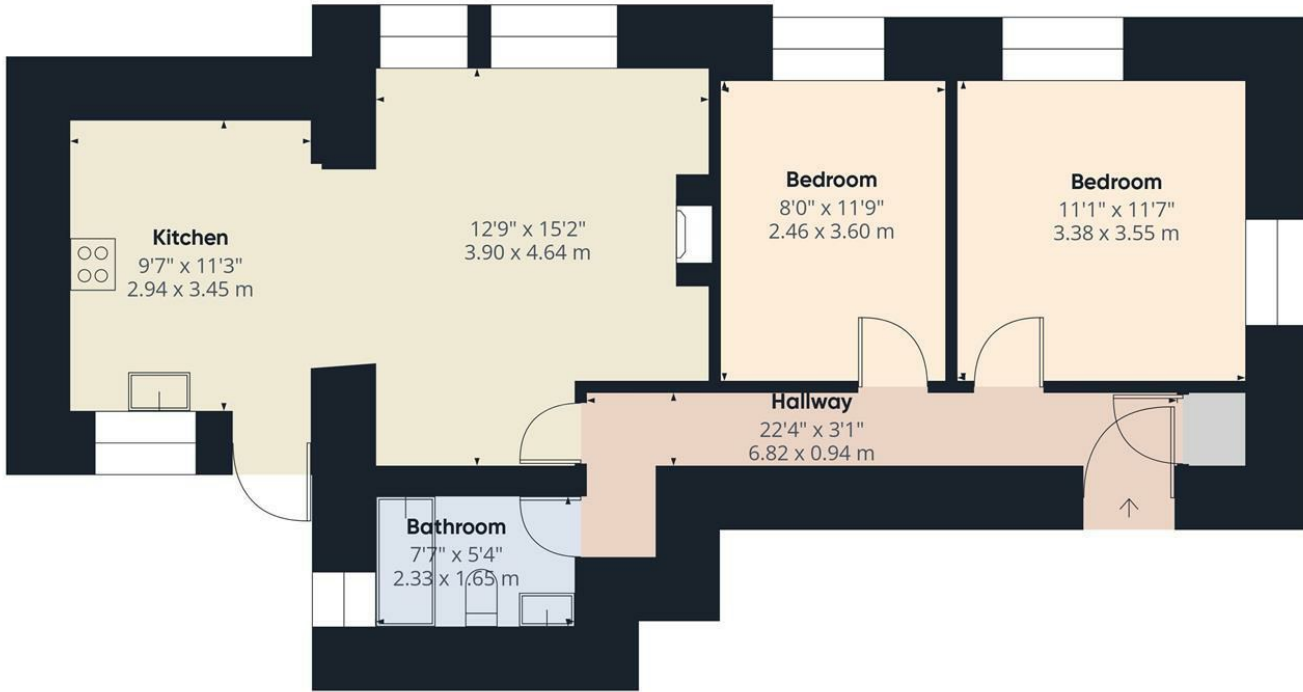
Utilities/Services - Mains Electric, Water & Drainage, Gas Central Heating

Wiltshire Council Tax - Band B

Tenure - Freehold







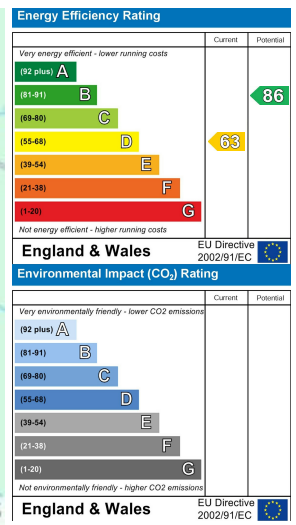
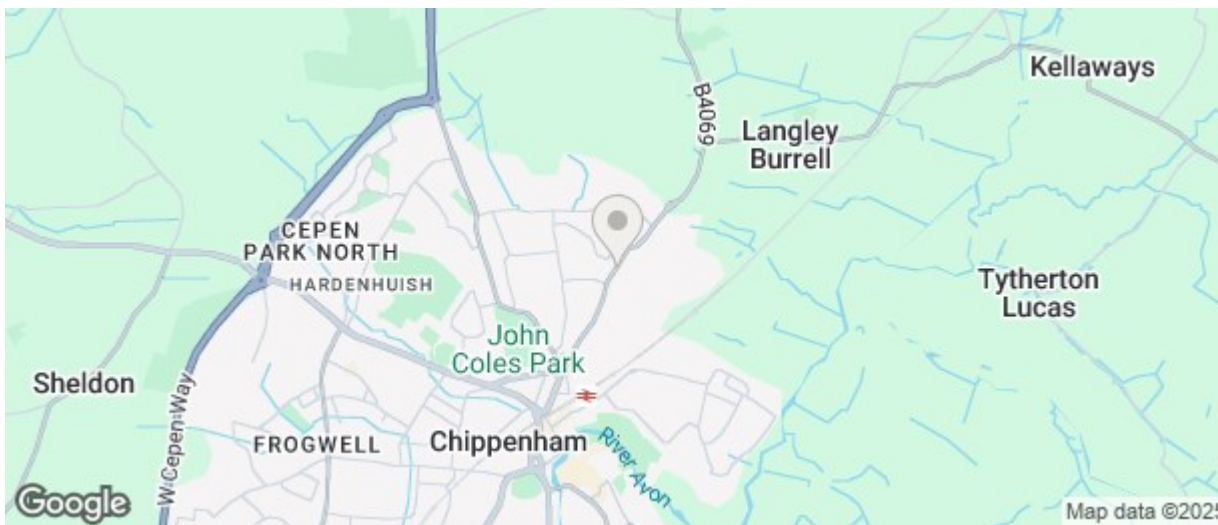
Approximate total area⁽¹⁾

654 ft²
60.7 m²

(1) Excluding balconies and terraces

Calculations reference the RICS IPMS 3C standard. Measurements are approximate and not to scale. This floor plan is intended for illustration only.

GIRAFFE 360



The particulars are set out as a general outline only for the guidance of intended purchasers or lessees, and do not constitute, any part of a contract. Nothing in these particulars shall be deemed to be a statement that the property is in good structural condition or otherwise nor that any of the services, appliances, equipment or facilities are in good working order. Purchasers should satisfy themselves of this prior to purchasing